



## Switchgear type RKS4-1P/2 for rated voltage 500V



Switchgear type RKS4-1P/2 is an electrical device designed for use in the underground mining pits in non-explosive conditions and on the ground.

Switchgear type RKS4-1P/2 is designed for connecting and switching on receiver (especially drive-gear of conveyor belts) in the 3-phase mine grid with insulated star point on the transformer (system IT) of rated grid voltage of 500V.

Switchgear type RKS4-1P/2 is equipped with electrical power protections against the effects of short-circuits and overloads, and against lowering the ground resistance.

### TECHNICAL DATA

ingress protection	IP54
insulation rated voltage of main circuits	660 V
insulation rated voltage of auxiliary circuits	250 V
supply rated voltage	500 V
rated voltage of control circuit	24 V
maximum outlet load current	acc. to Table 1
number of 500 V outlets	1
dimensions	1600 x 70 x 370mm (height x width x depth)
weight	90 kg

Table 1

Switchgear type	Maximum outlet rated current (Ie) [A]	Maximum rated power of the connected receiver Pe [kW]	Rated current of clamps from the supply side (Inz) [A]
RKS4-1P/2	250	160	400

Note:

Load drains of the outlets can be adapted to the power of the receiver on request in range of from 55 kW to 160 kW

## CONSTRUCTION

Switchgear is composed of plate steel housing mounted on a support frame which allows the device to be hanged on a chain or placed on the ground.

## MODE OF OPERATION

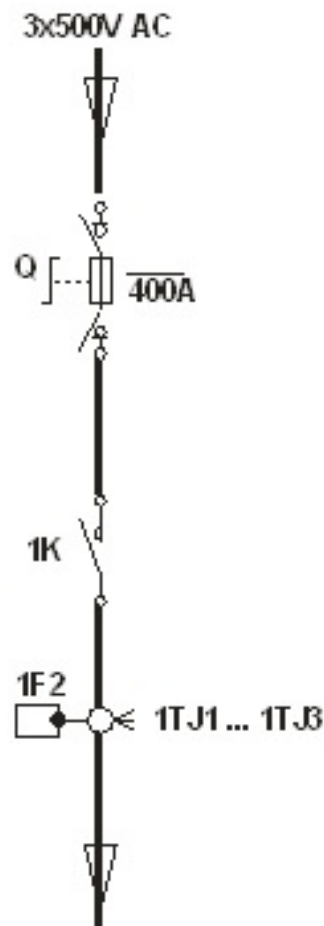
Control of the 500V outlet is carried out remotely through external control system by buttons (ON/OFF) or automatically.

The 500V outlet can be turned-off from face of the switchgear by interlock OFF button or remotely by moving the lever of the Q disconnector into an OFF position.

## SCHEMATIC DIAGRAM

### Legend:

- Q – fuse disconnector
- 1K – contactor
- 1F2 – overload protection



Orders should be submitted in writing or by fax to the address: